

# Driving pleasure that pays for itself

---

**Bravuris 2**

---

**Bravuris**

---

**Brillantis**

---

**Vanis**

---

**Polaris 2**

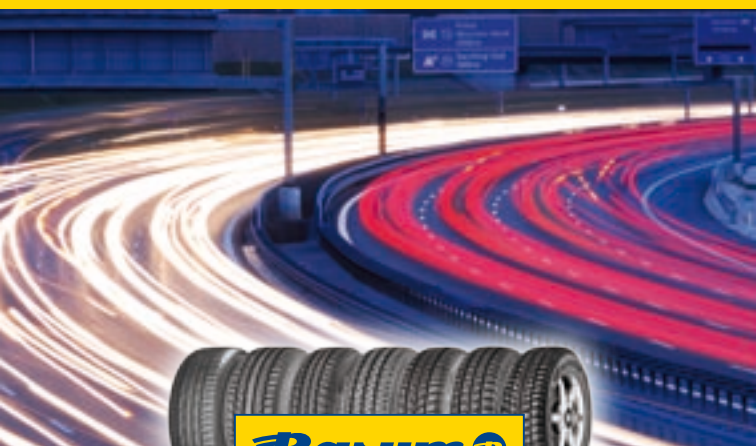
---

**SnoVanis**

---

**Norpolaris**

---



**Baum** 

**Good tyres. Good deal.**



## Bravuris 2

## Bravuris

### The economical high performer

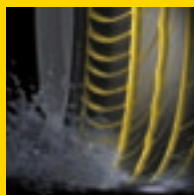
The new Bravuris 2 – so much driving pleasure for so little money! Barum's fastest all-rounder for long-lasting fun.



- Innovative asymmetrical tread pattern.
- Higher mileage performance – through computer-optimised contour and the latest silica compound.
- Even pressure distribution for reduced wear.



- Large tread lugs on the tyre outer side ensure handling stability and safe braking on dry roads.
- Siped ribs provide optimum steering precision – even at high speed.
- Max. traction and outstanding braking power through sturdy lugs.



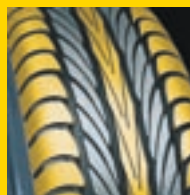
- Large numbers of lugs on the tyre inner side reduce the risk of aquaplaning and provide safety when braking in the wet.
- Wide grooves disperse water quickly and efficiently.
- New silica compound means best grip on wet roads.

### Sunny prices for demanding drivers

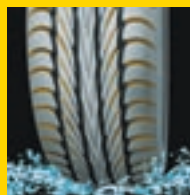
The Bravuris – for good grip during acceleration, perfect water dispersion and superior control, whatever the conditions.



- Optimised tread pattern with flat belt contour.
- Even pressure distribution reduces tyre wear.
- Increased driving stability and tyre life through tread ribs.



- Precise steering response, thanks to sturdy shoulder lugs.
- Circumferential central rib ensures optimum straight-line stability.
- Rugged tread lugs increase mileage performance.



- Lateral grooves reduce the risk of aquaplaning.
- Good grip on wet and dry roads thanks to optimised tread compound.
- Enhanced comfort and minimised driving noise through offset tread lugs.



## Brillantis

## Vanis

### High performance at low cost

**The Brillantis – a summer tyre offering a long service life, comfort and good grip, whatever the conditions.**



- Long service life through flat belt contour.
- Sturdy shoulder lugs minimise uneven tread wear.
- New contour shape enhances driving stability and comfort.



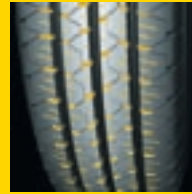
- Outstanding longitudinal and lateral water dispersion through longitudinal shoulder grooves.
- Central groove reduces the risk of aquaplaning.
- Increased mileage performance through optimised tread compound.



- Efficient transmission of forces on wet and dry roads, thanks to high tread rigidity.
- Sipes in the tread pattern reduce noise levels.
- Sturdy tread lugs increase tyre life.

### A sound deal – the economical all-rounder

**The Vanis – good handling and excellent driving performance in the wet are this tyre’s outstanding features.**



- Good traction at lower loads, thanks to supple sipes.
- Firm grip under dynamic loads through fine angled grooves.
- Reliable grip in all directions, thanks to multi-edged lugged ribs.



- Even wear through flat belt contour.
- Sturdy tread lug structure ensures a long tyre life.
- Tread lugs vary in length, thereby reducing noise levels.



- Wide, circumferential grooves channel water out of the tread.
- Optimised tread pattern reduces the risk of aquaplaning.
- New tread compound ensures high mileage performance.



## The right tyres for each season

### Winter tyres in winter

#### Winter tyres below 7°C

Due to their special rubber compound and tread design, winter tyres have a better grip on icy and wet winter roads and thus make driving significantly safer.

Their ribbed structure enables winter tyres to bite effectively into ice and snow.

During the colder half of the year, winter tyres are not only beneficial on grounds of safety, but also provide clear advantages on the financial front in terms of motoring performance.

### Summer tyres in summer

#### Summer tyres above 7°C

Special summer tyre compounds and treads facilitate short braking distances on both wet and dry surfaces.

Under summery road surface conditions, summer tyres guarantee a highly stable drive when cornering.

Their special compound components make summer tyres longer lasting in high temperatures than their winter counterparts – and they reduce fuel consumption.

- 10°C

0°C

7°C

10°C

20°C





## Polaris 2

up to 240 km/h

### Low-cost winter driving fun. A safe bet!

Polaris 2 – the all-rounder for superior road handling at all times. This winter tyre provides good grip in snow and slush, on ice and in the wet. Consistently – and at an optimum price/performance ratio. Approved for speeds up to 240 km/h (150 mph).



#### Sipes

- Combined stepped and wave-shaped sipes.
- Dig deep into the snow.
- Ensure good lateral guidance.



#### Tread

- With supple silica compound.
- Grips very well on wet roads too.
- Disperses water and slush very efficiently.



#### Contour

- Designed for comfortable running.
- Stabilises lateral movement.
- Ensures low wear.

## SnoVanis

### Very safe driving. Very good savings.

The SnoVanis combines safe driving characteristics, high mileage performance and low price. Plus optimum ground contact. A tyre for MPVs and light vans – even in the toughest applications on snow-covered roads.



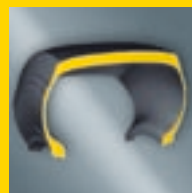
#### Grooves and sipes

- Perfect traction thanks to high number of sipes.
- Lateral grooves disperse water efficiently.
- For more fun at the wheel while keeping a safe grip on the road.



#### Tread ribs

- Offset arrangement of central ribs.
- Provide counter-support.
- Increase driving stability.



#### Contour

- Flat contour through flat tyre belt.
- Reduces deformation and slip.
- Minimises wear – for a long service life.



## Barum

## Norpolaris

### Speeds up on ice. Holds back on price.

The Norpolaris takes the bite out of winter. This attractively-priced tyre provides pure driving pleasure even on extremely icy roads, thanks to

- outstanding grip in snow and ice
- very good traction in the wet
- safe handling on dry roads
- long-lasting driving fun through low tyre wear.



#### Norpolaris on ice!

- Carefully arranged studs dig deep into the ice.
- Optimum traction and braking values mean safety on slippery surfaces.



#### Norpolaris in the rain!

- Tread pattern disperses water efficiently, removing the fear of aquaplaning.
- Perfect track holding and reliability on wet roads.



#### A safe grip on the road!

- Superior performance whatever the road surface – or weather.
- Positive road contact means good steering response in wet or dry conditions.
- Perfect grip in bends and on the straight.



#### Long-lasting driving pleasure!

- Extremely hard-wearing tread with durability guarantee.
- Integrated studs give the tread permanent support.
- More fun at the wheel thanks to the unique price/performance ratio!

**Barum Norpolaris.  
Long life on ice.  
At a cool price.**





[www.barum-online.com](http://www.barum-online.com)

## Barum tyres. High quality at low prices.

Barum tyres – for long-lasting safety and driving fun at low temperatures. Feel the benefits not just on the road, but also in your wallet. If you compare quality, price and performance, you'll see that Barum tyres are always the best choice.



Visit the  
Barum website

For good tyres, go to:

[www.barum-online.com](http://www.barum-online.com)



**Barum** 

Good tyres. Good deal.