

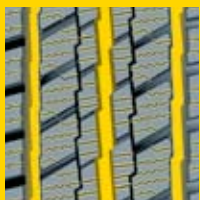


## SnoVanis

[www.barum-online.com](http://www.barum-online.com)

### Very safe driving. Very good savings.

The SnoVanis combines safe driving characteristics, high mileage performance and low price. Plus optimum ground contact. A tyre for MPVs and light vans – even in the toughest applications on snow-covered roads.



#### Grooves and sipes

- Perfect traction thanks to high number of sipes.
- Lateral grooves disperse water efficiently.
- For more fun at the wheel while keeping a safe grip on the road.



#### Tread ribs

- Offset arrangement of central ribs.
- Provide counter-support.
- Increase driving stability.



#### Contour

- Flat contour through flat tyre belt.
- Reduces deformation and slip.
- Minimises wear – for a long service life.

### Barum tyres. High quality at low prices.

Barum tyres – for long-lasting safety and driving fun at low temperatures. Feel the benefits not just on the road, but also in your wallet. If you compare quality, price and performance, you'll see that Barum tyres are always the best choice.



Visit the Barum website

For good tyres, go to:

[www.barum-online.com](http://www.barum-online.com)



# Black on white – the price is right

**NEW!** Polaris 3  
SnoVanis



08/2011 GB



Good tyres. Good deal.

Good tyres. Good deal.



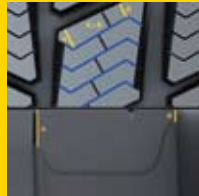
# Polaris 3

**NEW!**

## The right tyres for each season

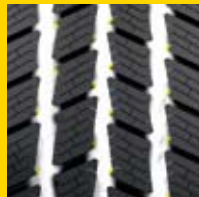
### Claws firmly in the snow.

The new Polaris 3 has a good grip in snow. It adapts perfectly to winter conditions, and thanks to its low wear and reduced fuel consumption, it is the ideal tyre for economical drivers.



#### Mileage performance

- Sipes of different depths at an angle to the lug edge
- High mileage performance by low wear
- Increased cost-efficiency



#### Braking in snow

- 'Snow catcher' stops the snow from slipping through the groove
- Optimised setting-off on snowy roads
- Offers controlled braking



#### Rolling resistance

- Additional groove in the shoulder lugs
- Low rolling resistance
- Reduced fuel consumption

### Winter tyres in winter

#### Winter tyres below 7°C

Due to their special rubber compound and tread design, winter tyres have a better grip on icy and wet winter roads and thus make driving significantly safer.

Their ribbed structure enables winter tyres to bite effectively into ice and snow.

During the colder half of the year, winter tyres are not only beneficial on grounds of safety, but also provide clear advantages on the financial front in terms of motoring performance.

### Summer tyres in summer

#### Summer tyres above 7°C

Special summer tyre compounds and treads facilitate short braking distances on both wet and dry surfaces.

Under summery road surface conditions, summer tyres guarantee a highly stable drive when cornering.

Their special compound components make summer tyres longer lasting in high temperatures than their winter counterparts – and they reduce fuel consumption.

